



NEOLITH New Products 2015

NEOLITH New Products 2015

Index

1. New Designs. Extended Collections. *Nuevos diseños. Colecciones ampliadas*

- 1.1 Classtone
- 1.2 Fusion
- 1.3 Iron

2. New Finishes. *Nuevos acabados*

- 2.1 Polished
- 2.2 Silk
- 2.3 Riverwashed

3. Formats and Thicknesses *Formatos y espesores*

- 3.1 1.500 x 1.500 mm, 1.500 1500 x 750 and 750 x 750 mm

4. Technical Features *Características técnicas*

5. Summary. *Resumen*



Beton Polished

NEOLITH

LET'S KEEP ON DREAMING...

TheSize, manufacturer of Neolith Sintered Compact Surface, is established in 2009 and launches its first Neolith slab in 2010. Since then, the growing commitment to research and development and constant impetus for its product innovation have consolidated Neolith as the pioneer architectural surface in the market that provides solutions to the most demanding professionals within this sector.

Once again, TheSize continues to surprise its customers with new designs, finishes, formats and thicknesses. After a phase of trends analysis in different markets; investment in state-of-the-art technology and extensive testing periods, TheSize gladly presents the 2015 season innovations that include exquisite designs and stunning finishes as well as new formats and thicknesses.

They say "The future belongs to those who believe in the beauty of their dreams." TheSize has made these dreams realities ... Do you dare to dream of Neolith?

SEGUIMOS SOÑANDO...

TheSize, fabricante de la Superficie Compacta Sinterizada Neolith, se constituye en 2009 y lanza al mercado su primera tabla Neolith en 2010. Desde entonces, la apuesta creciente por la investigación y desarrollo y un ímpetu constante por la innovación de su producto, han hecho que Neolith se consolide en el mercado como la superficie arquitectónica pionera y de referencia que aporta soluciones a los profesionales más exigentes del sector.

Un año más, TheSize se compromete a seguir sorprendiendo a sus clientes con nuevos diseños, acabados, formatos y espesores.

Tras una fase de análisis de tendencias y estilos en distintos mercados; inversión en tecnología de vanguardia y numerosas pruebas, TheSize presenta las novedades de la temporada 2015 que abarcan diseños exquisitos y acabados sorprendentes, junto a nuevos formatos y espesores.

Dicen que "El futuro pertenece a quienes creen en la belleza de sus sueños". TheSize ha hecho de estos sueños realidades, ¿te atreves a soñar con Neolith?



New Designs.
Extended Collections

CLASSTONE^{NEOLITH}

Onyx Polished

ESTATUARIO-E04 / ESTATUARIO-E04R

Classtone Collection

Format: 3.200 x 1.500 mm | Thicknesses: 6 and 12 mm | Finishes: Silk and Polished



Estatuario-E04



Estatuario-E04R

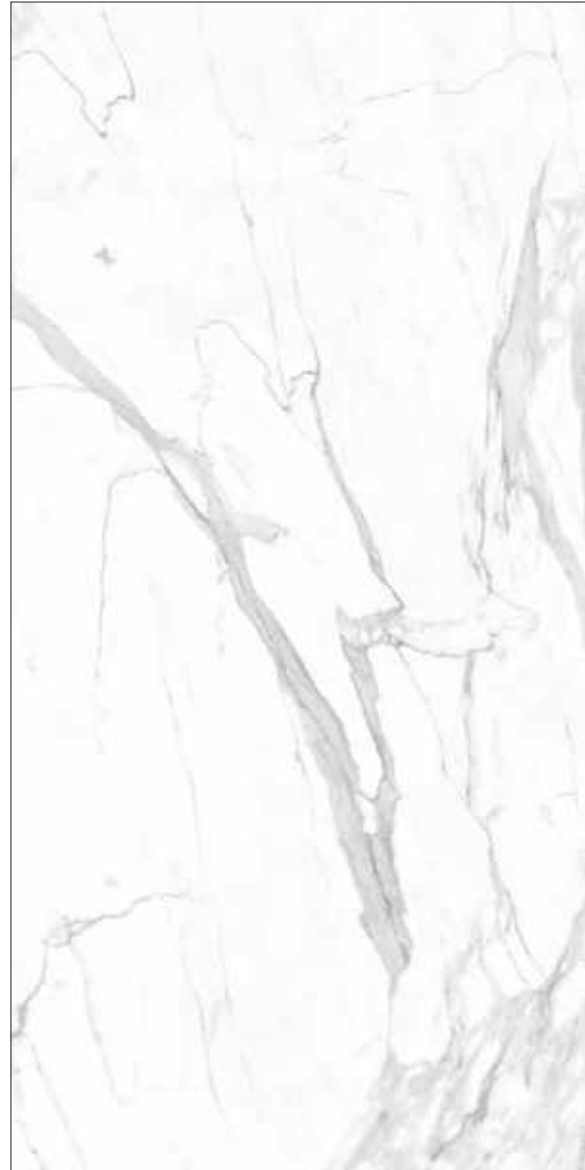
ESTATUARIO-E05 / ESTATUARIO-E05R

Classtone Collection

Format: 3.200 x 1.500 mm | Thicknesses: 6 and 12 mm | Finishes: Silk and Polished



Estatuario-E05



Estatuario-E05R

CALACATTA-C01 / CALACATTA-C01R

Classtone Collection

Format: 3.200 x 1.500 mm | Thicknesses: 6 and 12 mm | Finishes: Silk and Polished



Calacatta-C01



Calacatta-C01R

TRAVERTINO CLÁSICO

Classtone Collection

Format: 3.200 x 1.500 mm | Thicknesses: 6 and 12 mm | Finishes: Silk and Polished



Travertino Clásico



Detail

TRAVERTINO NAVONA

Classtone Collection

Format: 3.200 x 1.500 mm | Thicknesses: 6 and 12 mm | Finishes: Polished



Travertino Navona



Detail

ONYX

Classtone Collection

Format: 3.200 x 1.500 mm | Thicknesses: 6 and 12 mm | Finishes: Polished



Onyx



Detail



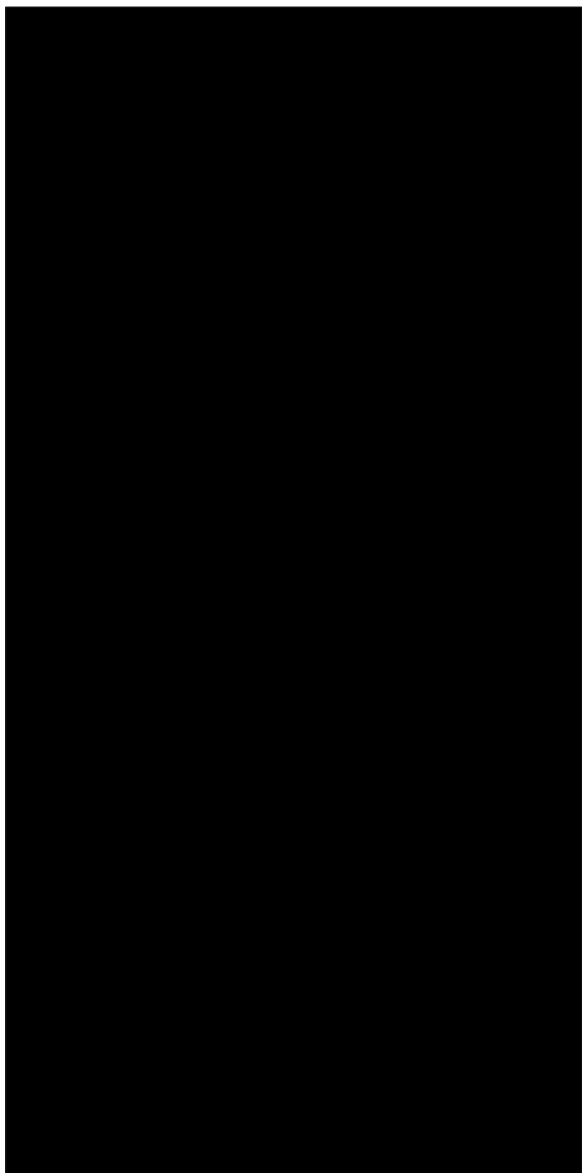
New Designs.
Extended Collections

FUSION

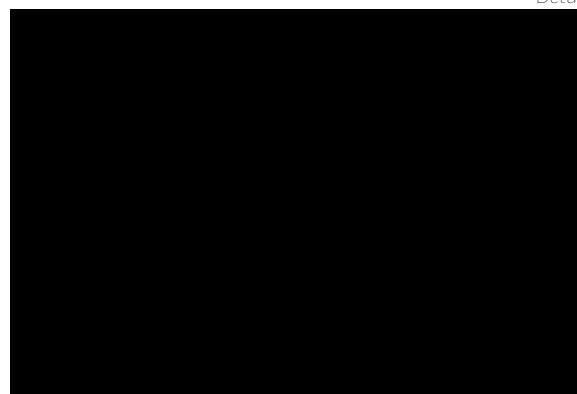
NERO ASSOLUTO

Fusion Collection

Format: 3.200 x 1.500 mm | Thicknesses: 6 and 12 mm | Finishes: Polished



Nero Assoluto

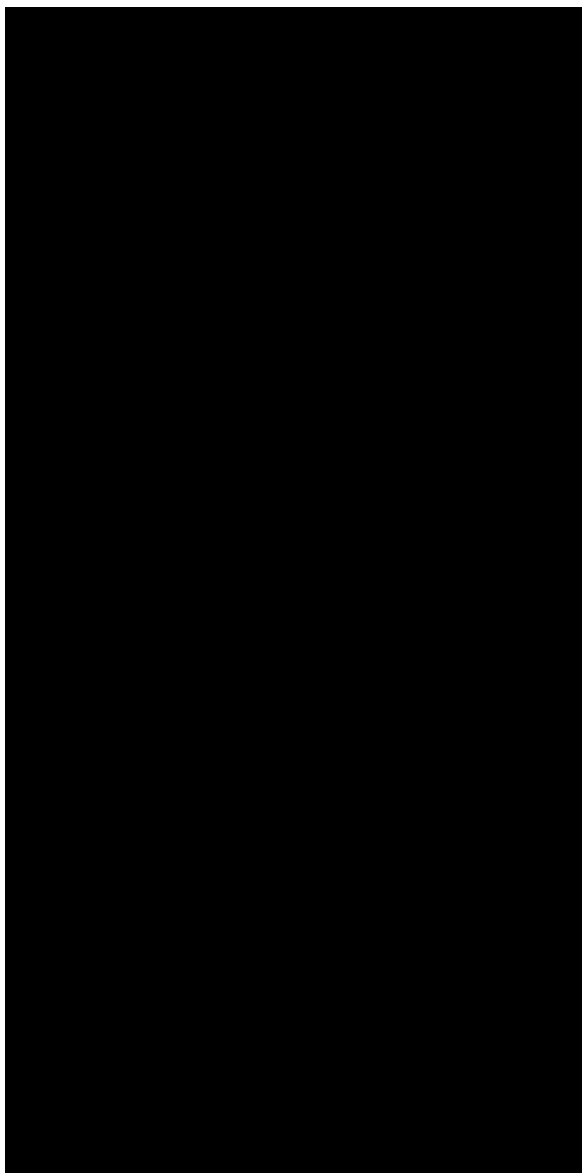


Detail

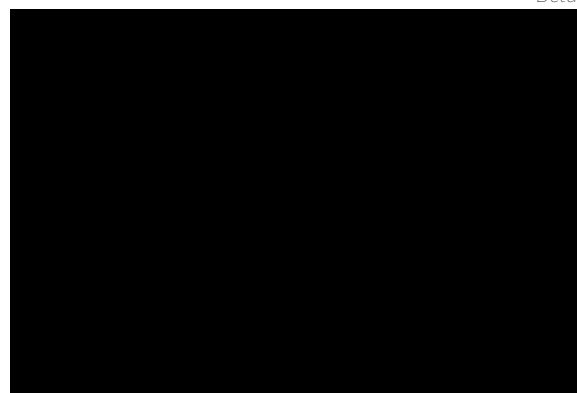
NERO ZIMBABWE

Fusion Collection

Format: 3.200 x 1.500 mm | Thicknesses: 6 and 12 mm | Finishes: Riverwashed



Nero Zimbabwe



Detail

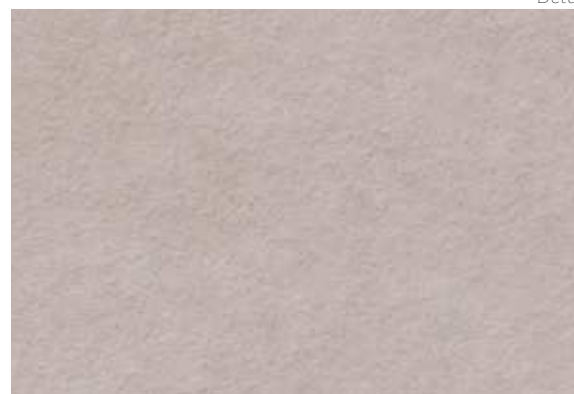
PIETRA DI LUNA*

Fusion Collection

Format: 3.200 x 1.500 mm | Thicknesses: 6 and 12 mm | Finishes: Silk and Riverwashed



Pietra di Luna



Detail

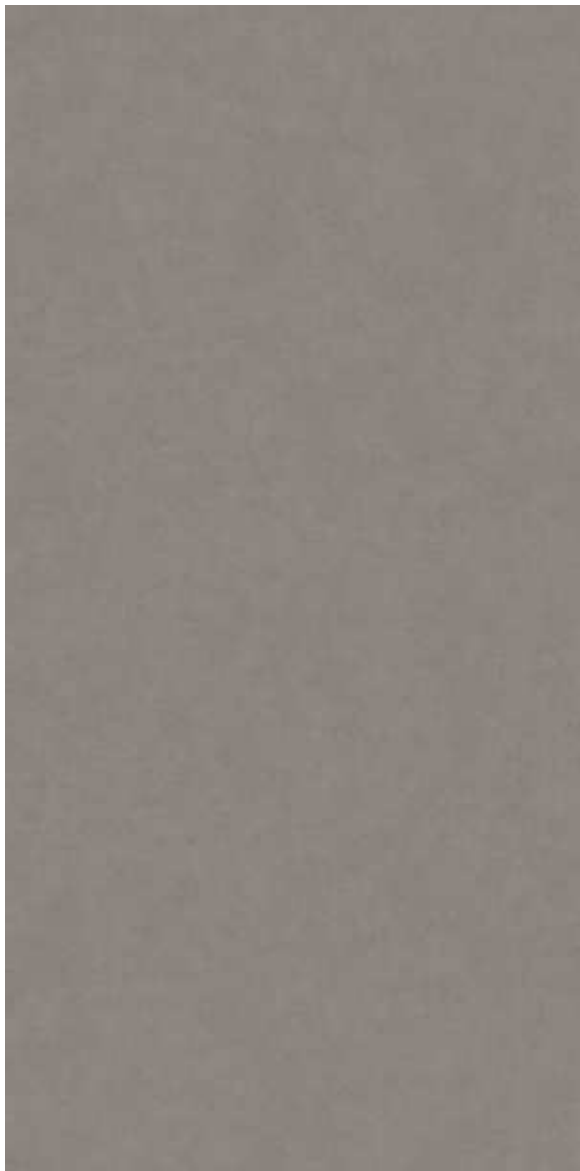
*Pietra Collection can be completed with the model Nieve in Silk and Riverwashed finishes to offer a complete range of neutral colors.

*La colección Pietra puede completarse con el modelo Nieve en acabado Silk o Riverwashed para ofrecer una completa gama de colores neutros.

PIETRA DI PIOMBO*

Fusion Collection

Format: 3.200 x 1.500 mm | Thicknesses: 6 and 12 mm | Finishes: Silk and Riverwashed



Pietra di Piombo



Detail

*Pietra Collection can be completed with the model Nieve in Silk and Riverwashed finishes to offer a complete range of neutral colors.

**La colección Pietra puede completarse con el modelo Nieve en acabado Silk o Riverwashed para ofrecer una completa gama de colores neutros.*

NEOLITH

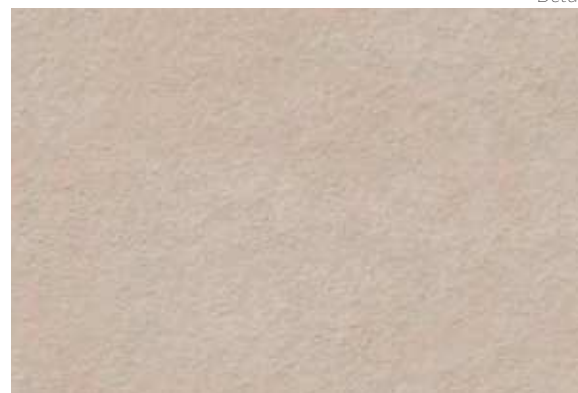
PIETRA DI OSSO*

Fusion Collection

Format: 3.200 x 1.500 mm | Thicknesses: 6 and 12 mm | Finishes: Silk and Riverwashed



Pietra di Osso



Detail

*Pietra Collection can be completed with the model Nieve in Silk and Riverwashed finishes to offer a complete range of neutral colors.

*La colección Pietra puede completarse con el modelo Nieve en acabado Silk o Riverwashed para ofrecer una completa gama de colores neutros.



New Designs.
Extended Collections
IRON

Iron Blue Satin

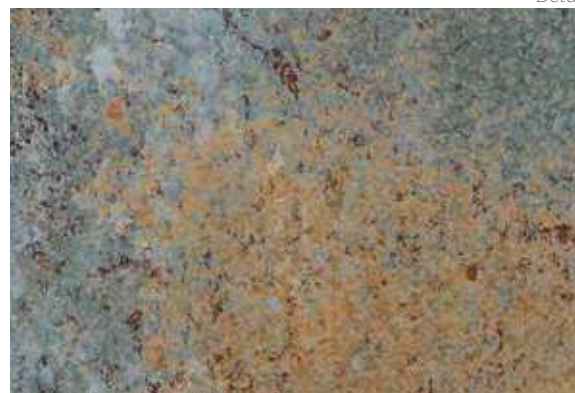
IRON BLUE

Iron Collection

Format: 3.200 x 1.500 mm | Thicknesses: 6 and 12 mm | Finishes: Satin



Iron Blue



Detail

IRON ASH

Iron Collection

Format: 3.200 x 1.500 mm | Thicknesses: 6 and 12 mm | Finishes: Satin



Iron Ash



Detail

FINISHES

New Finishes

Satin



Phedra Satin

Satin finish has been the only option till the current moment. It is characterized by a natural matt look and a regular texture conferring high resistance properties to the material.

El acabado Satin (satinado) ha sido la única opción disponible hasta el momento. Este acabado se caracteriza por su apariencia mate y su textura regular, lo que confiere buenas propiedades de resistencia al material.

Silk



Beton Silk

This finish is similar to Satin finish but its texture is softer to the touch. The smoothness is achieved through the Neolith Airless Pistol (NAP) technology granting the surface with a silky finish that proves especially interesting for certain models in the application of interior floorings preventing stains and making easier the cleaning of the material.

Este acabado recuerda al Satin (Satinado) pero su textura resulta más suave al tacto. Dicha suavidad se consigue gracias a la tecnología Neolith Airless Pistol (NAP) que dota a la superficie de un acabado sedoso que resulta especialmente interesante para ciertos modelos en la aplicación de pavimentos interiores, previniendo manchas y facilitando la limpieza del material.

FINISHES

New Finishes

Riverwashed



Beton Riverwashed

This new finish is presented as an evolution of the current Riverwashed providing greater relief, depth and surface roughness. It can be compared to a brush hammered or aged finish and adds a touch of realism to models inspired by natural stones.

Este nuevo acabado se presenta como una evolución del Riverwashed actual aportando mayor relieve, profundidad y rugosidad a la superficie. Se puede comparar a un abujardado o envejecido, según el modelo, y da un toque de realismo a los diseños inspirados en piedras naturales.

Polished



Beton Polished

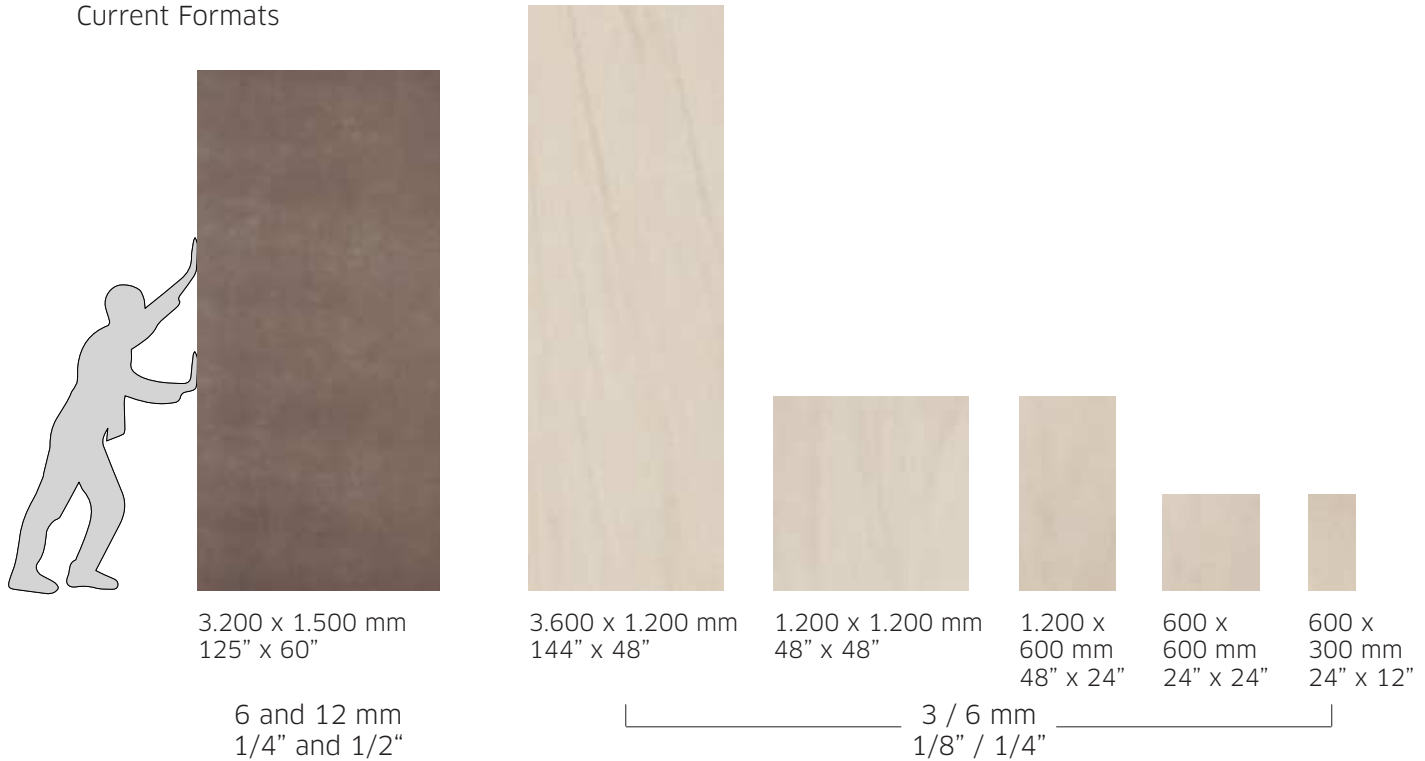
The Polished finish adds shine, depth, a reflection that stands out for its complete flatness and a touch of elegance. This finish proves ideal for line of exclusive stones Classtone but also to create amazing effects as in the case of Beton, noteworthy for the originality of mixing a concrete material with a typical finish of more classical products.

El acabado Polished aporta brillo, profundidad, un reflejo que llama la atención por su planimetría y un toque de elegancia a todos los diseños. Este acabado resulta ideal para la línea de piedras exclusivas Classtone, también para crear sorprendentes efectos, como en el caso del Beton, que destaca por la originalidad de mezclar un material hormigonado con un acabado típico de otros productos más clásicos.

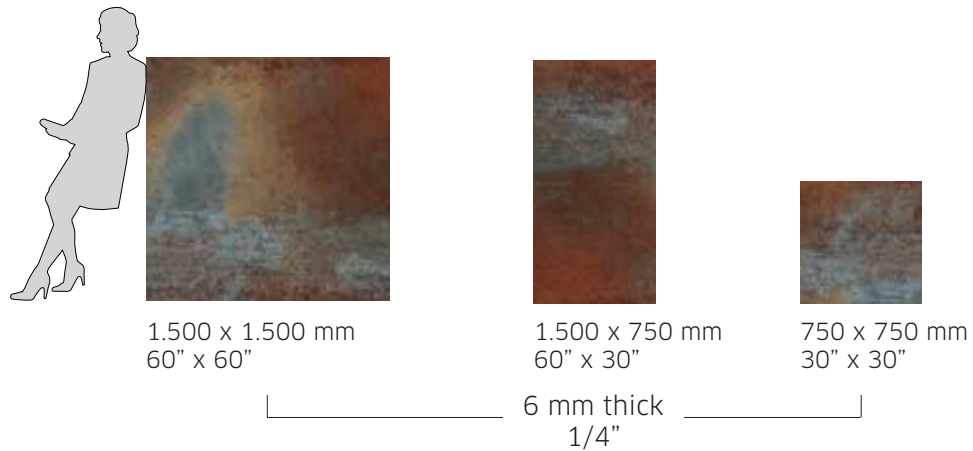
FORMATS AND THICKNESSES

New Formats 2015 - Slabs and Tiles

Current Formats



New Formats



TECHNICAL FEATURES

Neolith Properties



RESISTANT TO HIGH TEMPERATURES

Resistente a altas temperaturas



LIGHT

Ligero



RESISTANT TO BENDING

Resistente a la flexión



RESISTANT TO WEAR AND SCRATCH

Resistente al desgaste y rayado



WATERPROOF

Impermeable



NDD TECHNOLOGY

Tecnología NDD



EASY TO CLEAN

Fácil de limpiar



HYGIENIC

Higiénico



ENVIRONMENTAL FRIENDLY

Respetuoso con el medio ambiente



UV RESISTANT

Resistente Rayos UV



HEAVY TRANSIT

Alto transito



100% RECYCLABLE

100% Reciclable

NEOLITH

		3200x1500 mm				3600x1200 mm
		6 and 12 mm				3 and 5* mm
		Finishes available				
Collection	Color	Satin	Polished	Silk	Riverwashed	Satin
Colorfeel						●
	Arctic White	●	●	●		●
	Avorio	●				●
	Chocolate					●
						●
	Humo	●				●
						●
	Moka					●
	Nero	●				●
	Nieve	●	●	●	●	●
Perla					●	
Fusion	Arena	●	●			●
	Barro	●				●
	Basalt Beige	●				●
	Basalt Black	●		●		●
	Basalt Grey	●		●		●
	Belgian Blue	●				●
	Cement	●				●
	Lava	●				●
	Phedra	●				●
	Beton		●	●	●	
	Pietra di Luna			●	●	
	Pietra di Piombo			●	●	
	Pietra di Osso			●	●	
				●		
					●	

● Now Available

● New Product 2015

* 5 mm will be substituted by 6 mm starting from January 2015.

		3200x1500 mm			3600x1200 mm	
		6 and 12 mm			3 and 5* mm	
		Finishes available				
Collection	Color	Satin	Polished	Silk	Riverwashed	Satin
Iron	Iron Copper	●				●
	Iron Corten	●				●
	Iron Grey	●				●
	Iron Moss	●				●
	Iron Blue	●				
	Iron Ash	●				
Textil	Textil Black	●				●
	Textil White	●				●
Timber	Timber Ash					●
	Timber Ice					●
	Timber Night					●
	Timber Oak					●
Classtone	Estatuario E01/E01R		●	●		
	Estatuario E04/E04R		●	●		
	Estatuario E05/E05R		●	●		
	Marfil		●	●		
	Pulpis		●	●		
	Calacatta C01/C01R		●	●		
	Travertino Clasico		●	●		
	Travertino Navona		●			
	Onyx		●			

● Now Available

● New Product 2015

* 5 mm will be substituted by 6 mm starting from January 2015.

THESIZE SURFACES SL

P.I. Camí Fondo, Supoi 8. C/ dels Ibers, 31

CP 12550 Almazora (Castellón), Spain

P: +34 964 652 233

info@thesize.es

www.neolith.com

NEOLITH